
Dox Test

Release 0.4

AMV

Feb 10, 2022

CONTENTS:

| | | |
|----------|---|----------|
| 1 | Inline Tabs Test | 1 |
| 1.1 | Installation of Frobnicator | 1 |
| 2 | TikZ Examples | 3 |
| 2.1 | Inline Examples | 3 |
| 2.2 | Examples of TikZ drawings loaded from files | 4 |
| 3 | Indices and tables | 7 |

INLINE TABS TEST

1.1 Installation of Frobnicator

Choose your operating system below for specific installation instructions:

Steps to install on Windows 7 or later:

1. Download VideoF2B.exe from such-and-such link.
2. Move the downloaded file to any desired folder.
3. Run the application by double-clicking it.
4. Enjoy!
5. Extra lines just to observe effect of height difference between tabs:
6. abc
7. xyz
8. xyzzzy
9. etc.

Steps to install on Ubuntu Linux:

1. Download the videof2b binary from such-and-such link.
2. Move to any desired directory.
3. Run the application videof2b.
4. Enjoy!

Additional options for Ubuntu:

Nested tab for Ubuntu 20.04 LTS

Nested tab for Ubuntu 22.04

This is text after the tabs, which seems to flow right through. This avoids breaking the flow of the document.

TIKZ EXAMPLES

This is awesome!

It is widely known that you can use TeX in Sphinx documentation to create mathematical formulas. However, it is also possible to create excellent vector graphics directly in Sphinx! This means you no longer need to create your vector illustrations in external software, export them to SVG or PNG, include them with the rest of the assets in the documentation system, etc. Let Sphinx do the work for you.

The main advantages are:

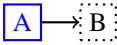
1. Out-of-the-box support for [PGF/TikZ](#) via the Sphinx extension [sphinxcontrib-tikz](#).
2. Need to modify an illustration? No problem, just edit its code directly in the documentation text and rebuild.
3. Plaintext-based system: easy to control revisions via your favorite VCS.
4. Integrates easily and flawlessly with [Read The Docs](#).

Based on instructions from [sphinxcontrib-tikz](#) extension and a Sphinx primer by [Li-Pro.Net](#).

2.1 Inline Examples

Basic example:



The obligatory ubiquitous example, with caption: An example inline role: 

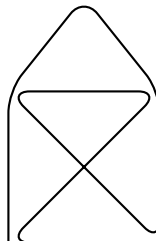


Fig. 1: An Example Directive with Caption

2.2 Examples of TikZ drawings loaded from files

Classical physics: a free-body diagram Control systems: a basic diagram Drawing demo by author of the package

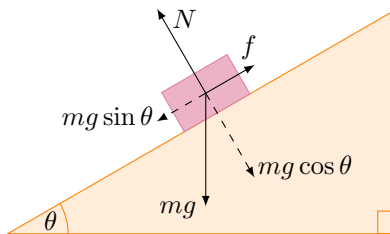


Fig. 2: A classical physics problem

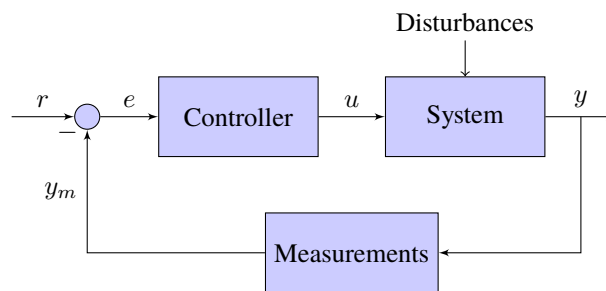


Fig. 3: Control system principles (PGF/TikZ example)

`tikz-3dplot` [\[source\]](#) 3D Cube 1 (plain TikZ) 3D Cube 2 (drawn using `tikz-3dplot`) Spherical Polar coordinate system (drawn using `tikz-3dplot`) Spherical Elevation coordinate system (drawn using `tikz-3dplot`)

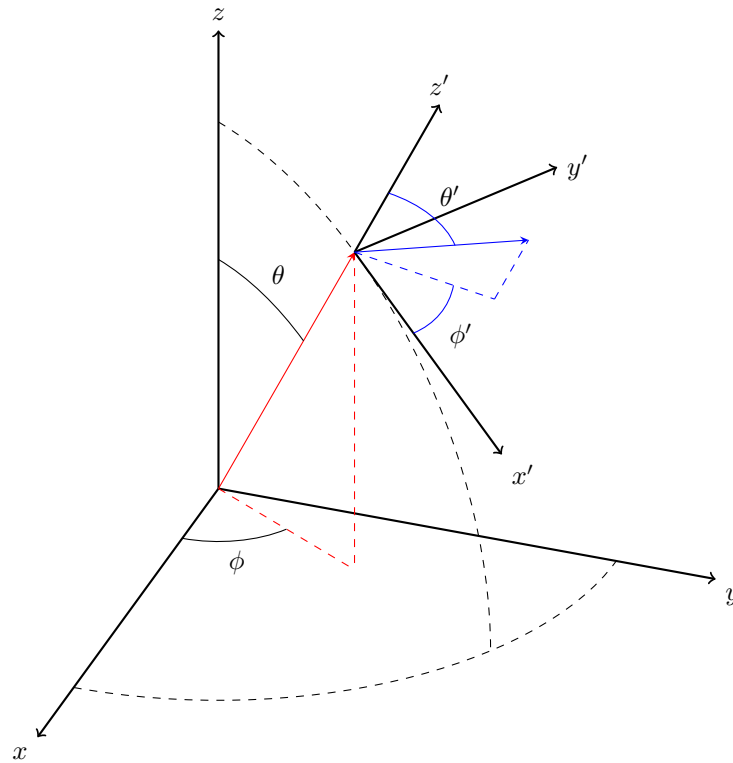


Fig. 4: Demo of tikz-3dplot

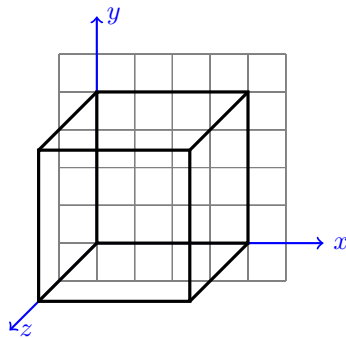


Fig. 5: Cube in 3D (without view transform)

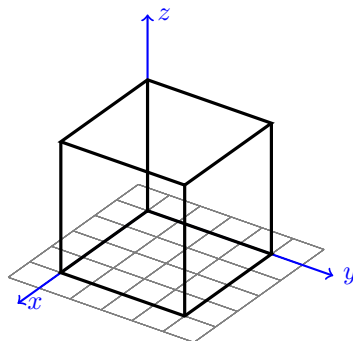


Fig. 6: Cube in 3D (after view transform)

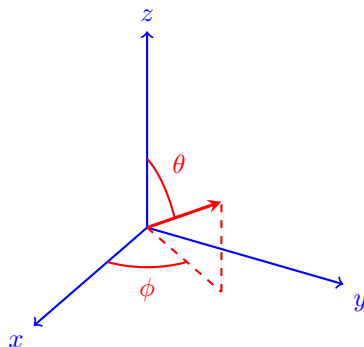


Fig. 7: Spherical polar coordinate system

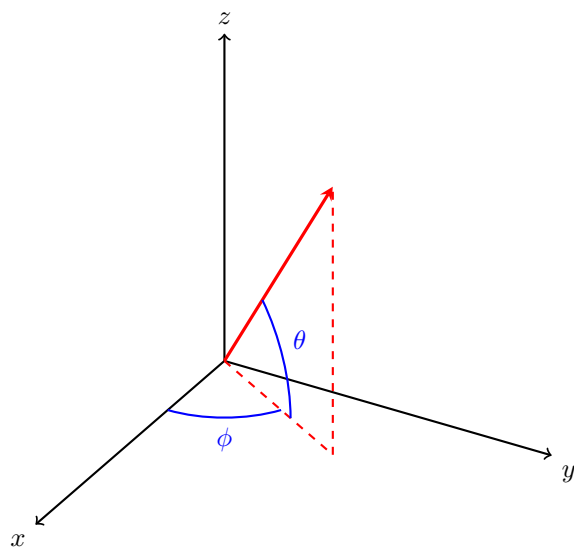


Fig. 8: Spherical elevation coordinate system

INDICES AND TABLES

- `genindex`
- `modindex`
- `search`